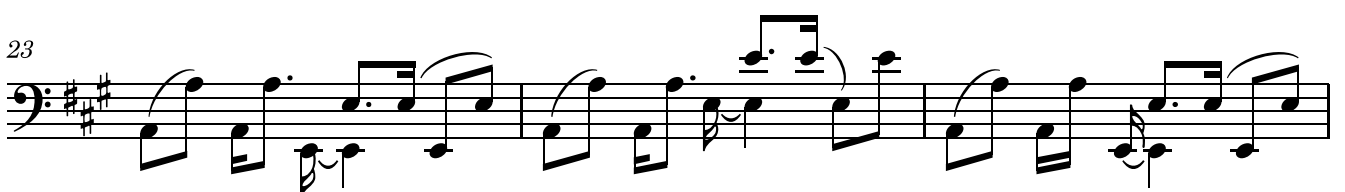
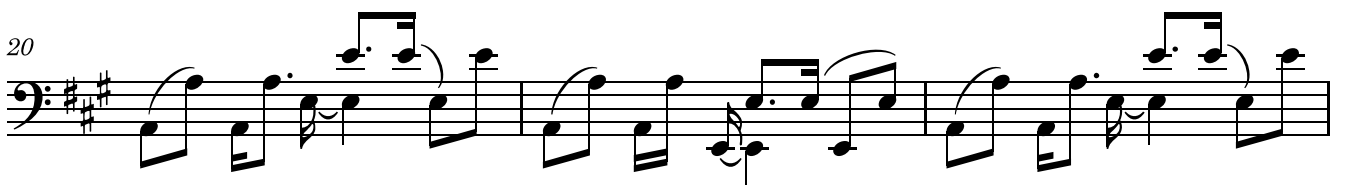
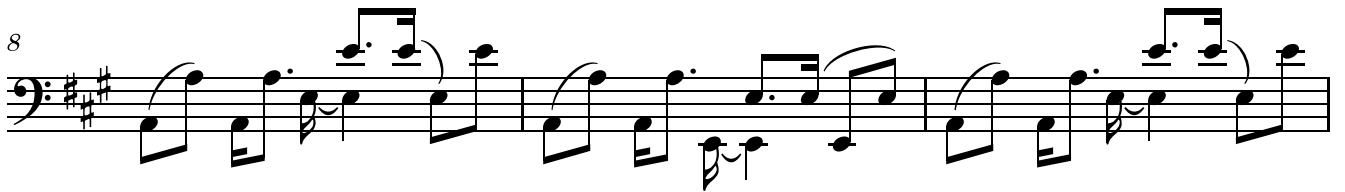
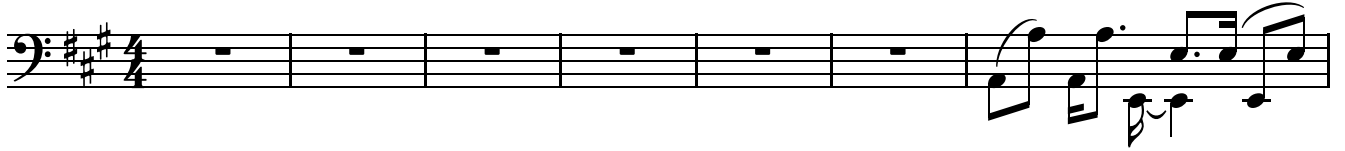


Wehrt Euch leistet Widerstand - Jazz Funk


Urheber unbekannt Bearbeiter : Oliver Frederic Dieck
2025

Slapp / Fretless Bass - Oktave höher notiert

♩ = 88



26



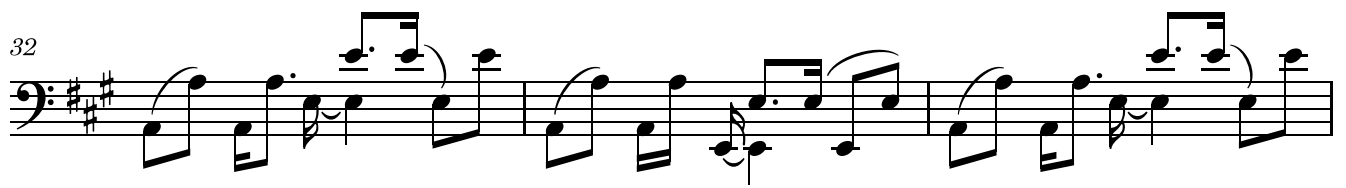
Measures 26-28: Bass line in G major (one sharp) and 4/4 time. The melody consists of eighth notes and quarter notes, with a consistent eighth-note bass line. Measure 26 starts with a G2 note. Measure 27 has a triplet of eighth notes. Measure 28 has a quarter rest followed by a quarter note.

29



Measures 29-31: Bass line in G major. Measure 29 has a quarter rest followed by a quarter note. Measure 30 has a quarter rest followed by a quarter note. Measure 31 has a quarter rest followed by a quarter note.

32



Measures 32-34: Bass line in G major. Measure 32 has a quarter rest followed by a quarter note. Measure 33 has a quarter rest followed by a quarter note. Measure 34 has a quarter rest followed by a quarter note.

35



Measures 35-37: Bass line in G major. Measure 35 has a quarter rest followed by a quarter note. Measure 36 has a quarter rest followed by a quarter note. Measure 37 has a quarter rest followed by a quarter note.

38



Measures 38-40: Bass line in G major. Measure 38 has a quarter rest followed by a quarter note. Measure 39 has a quarter rest followed by a quarter note. Measure 40 has a quarter rest followed by a quarter note.

41



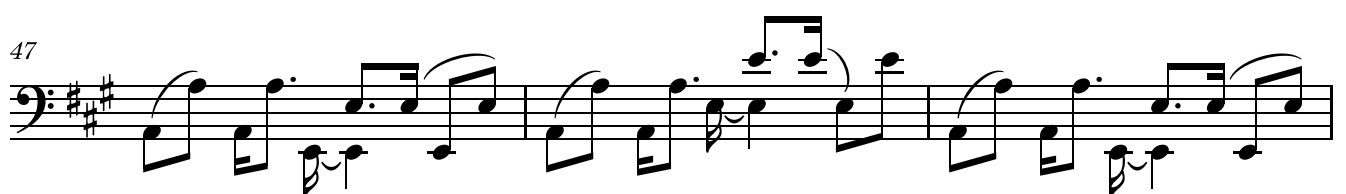
Measures 41-43: Bass line in G major. Measure 41 has a quarter rest followed by a quarter note. Measure 42 has a quarter rest followed by a quarter note. Measure 43 has a quarter rest followed by a quarter note.

44



Measures 44-46: Bass line in G major. Measure 44 has a quarter rest followed by a quarter note. Measure 45 has a quarter rest followed by a quarter note. Measure 46 has a quarter rest followed by a quarter note.

47



Measures 47-49: Bass line in G major. Measure 47 has a quarter rest followed by a quarter note. Measure 48 has a quarter rest followed by a quarter note. Measure 49 has a quarter rest followed by a quarter note.

50

Measures 50-52: A bass line in G major (one sharp) and 4/4 time. The melody consists of eighth notes and quarter notes, with a consistent eighth-note accompaniment in the lower register. Measure 50 starts with a G2 note. Measure 52 ends with a double bar line.

53

Measures 53-55: Continuation of the bass line. Measure 53 starts with a G2 note. Measure 55 ends with a double bar line.

56

Measures 56-58: Continuation of the bass line. Measure 56 starts with a G2 note. Measure 58 ends with a double bar line.

59

Measures 59-61: Continuation of the bass line. Measure 59 starts with a G2 note. Measure 61 ends with a double bar line.

62

Measures 62-64: Continuation of the bass line. Measure 62 starts with a G2 note. Measure 64 ends with a double bar line.

65

Measures 65-67: Continuation of the bass line. Measure 65 starts with a G2 note. Measure 67 ends with a double bar line.

68

Measures 68-70: Continuation of the bass line. Measure 68 starts with a G2 note. Measure 70 ends with a double bar line.